

Operating Instruction for Turbine-wheel Flow Meter

Model: DRS



Model:
DRS-...0
DRS-...F5...



Model:
DRS-...C3

1. Contents

1. Contents.....	2
2. Note	3
3. Instrument Inspection	3
4. Regulation Use	4
5. Operating Principle.....	4
6. Mechanical Connection.....	5
6.1. Operational conditions check-up:.....	5
6.2. Mounting	5
7. Electrical Connection	6
7.1. General	6
7.2. Evaluation electronics Frequency output without Pt100	6
7.3. Evaluation electronics: Frequency output and analogue output with Pt100 (DRS-..P)	7
7.4. Evaluation electronics: analogue output (..L..)	7
7.5. Cable outlet with M12x1 angle plug electronic options F3x and L3x....	9
7.6. Compact electronics: (..C30R, ..C30M, ..C34P, ..C34N)	9
8. Commissioning.....	10
8.1. Frequency output.....	10
8.2. Analogue output.....	10
8.3. Compact electronics	10
9. Maintenance	11
10. Technical information	12
10.1. Sensor data	12
10.2. Evaluation electronics	12
11. Order Codes	14
12. Dimensions	16
13. Disposal	17
14. EU Declaration of Conformance	18
15. UK Declaration of Conformity.....	19

Manufactured and sold by:

Kobold Messring GmbH
Nordring 22-24
D-65719 Hofheim
Tel.: +49(0)6192-2990
Fax: +49(0)6192-23398
E-Mail: info.de@kobold.com
Internet: www.kobold.com

2. Note

Please read and take note of these operating instructions before unpacking and putting the unit in operation and follow the instructions precisely as described herein.

The instruction manuals on our website www.kobold.com are always for currently manufactured version of our products. Due to technical changes, the instruction manuals available online may not always correspond to the product version you have purchased. If you need an instruction manual that corresponds to the purchased product version, you can request it from us free of charge by email (info.de@kobold.com) in PDF format, specifying the relevant invoice number and serial number. If you wish, the operating instructions can also be sent to you by post in paper form against an applicable postage fee.

The devices are only to be used, maintained and serviced by persons familiar with these operating instructions and with the prevailing regulation applying to procedural safety and the prevention of accidents.

When used in machines, the measuring unit should be used only then when the machines fulfil the EC-machine guide lines.

PED 2014/68/EU

In acc. with Article 4 Paragraph (3), "Sound Engineering Practice", of the PED 2014/68/EU no CE mark.

Table 8, Pipe, Group 1 dangerous fluids

3. Instrument Inspection

These devices are checked before shipping and sent out in perfect condition. Should damage to a device be visible, we recommend a thorough inspection of the delivery packaging. In case of damage, please inform your parcel service/forwarding agent immediately, since they are responsible for damages during transit.

Scope of delivery:

- Turbine-Wheel Flow Meter: Model DRS

4. Regulation Use

The DRS is to be installed only in the specified applications. Any use of the DRS sensor which exceeds the manufacturer's specifications may invalidate the warranty and any resulting damage is not the responsibility of the manufacturer. The user assumes all risk for such usage. The application specifications include the installation, start-up and service requirements specified by the manufacturer.

5. Operating Principle

The DRS flow meter operates on the turbine wheel principle. The liquid first flows through a laminar flow element that eliminates turbulence and routes the flow stream into the turbine wheel. The turbine wheel then starts to rotate. This rotary motion is sensed non-contacting by magnets embedded in the turbine wheel and converted to a frequency signal. The frequency is proportional to the flow velocity. Various outputs, such as frequency divider, analogue output or compact electronics with LED display with limit contacts are available as options. An integrated temperature sensor for simultaneous measuring of flow rate and temperature is also available as an additional option. The rotating vane is sapphire-supported: this ensures a high degree of linearity and long service life.

6. Mechanical Connection

6.1. Operational conditions check-up:

- Flow volume
- max. operational pressure
- max. operational temperature



Attention! Exceeding prescribed ranges may cause damage to ball-bearings and considerable measurement errors may result.

6.2. Mounting

- Installation can take place in horizontal and ascending pipes, flow direction from bottom to top. Flow in the direction of the arrow.
- Pressure- and tensile loading is to be avoided on the connection threads. Inlet and outlet piping should be secured at least 50 mm away mechanically from the connections.
- Check the sealing of the connections
- The use of flat sealings is to be preferred. The sealing surfaces are shown in section 11 - "Dimensions"

7. Electrical Connection

7.1. General



Attention! Ensure that the power ratings of your supply system are in agreement with the power ratings of the flow meter.

- Please ensure that the electric supply lines are not active.
- Wire the connection cable/plug with the supply line according to the following connection diagram.
- We recommend a cross-sectional area of 0.25 mm² for the supply line.

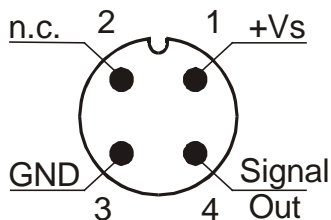


Attention! A false level on plug connections may cause destruction of unit's electronics.

7.2. Evaluation electronics

Frequency output without Pt100

Plug connection(..F3000; ..F3200; ..F3400; ..F3900)



Plug connection (..F5000; ..F5200; ..F5400; ..F5900; ..K0000)

brown: + Vs
blue: GND
Black: Signal

...S0000

white: + Vs
green: Signal
brown: GND

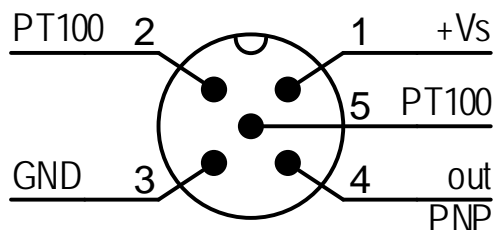
...S000P

brown: + Vs
black: Signal
green-yellow: GND/PT100-1
yellow: PT100-2

7.3. Evaluation electronics:

Frequency output and analogue output with Pt100 (DRS-..P)

**Plug connection (..F300P;
..F320P, ..F340P, ..F390P,
..L303P; ..L343P)**

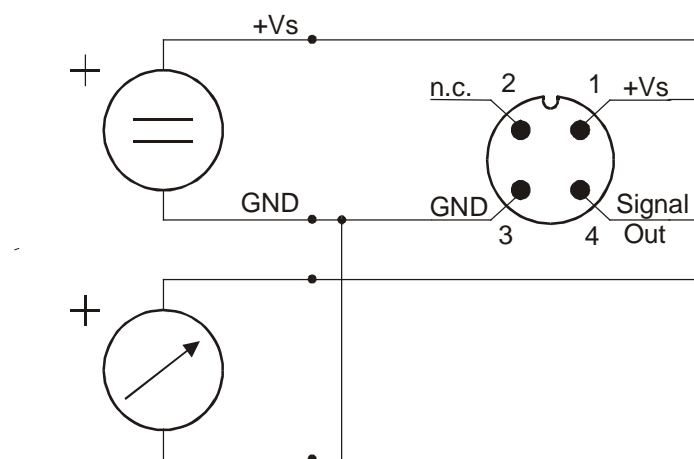


**Cable connection (..F500P;
..F520P, ..F540P, F590P)**

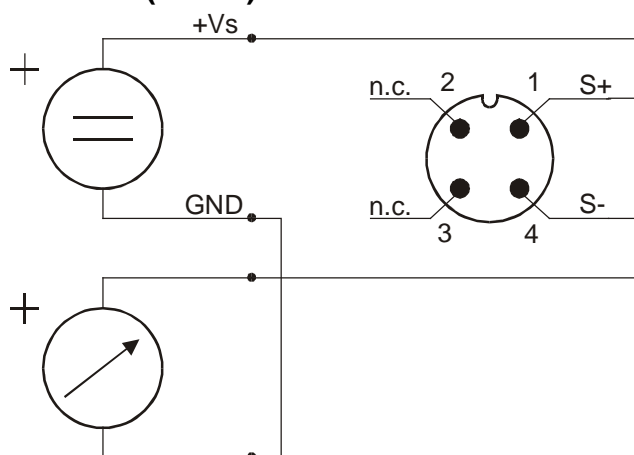
brown: +Vs
blue: GND
black: Signal
white: PT100 2-wire
grey: PT100 2-wire

7.4. Evaluation electronics: analogue output (..L..)

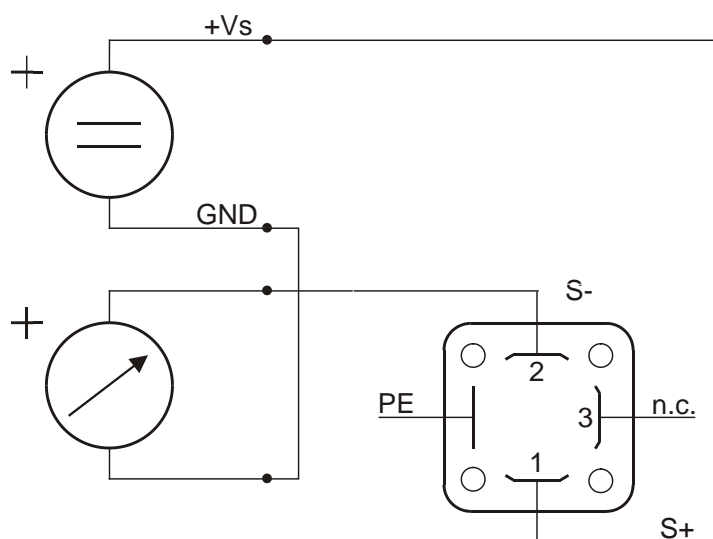
3-conductor (..L303, ..L343)



2-conductor (..L342)

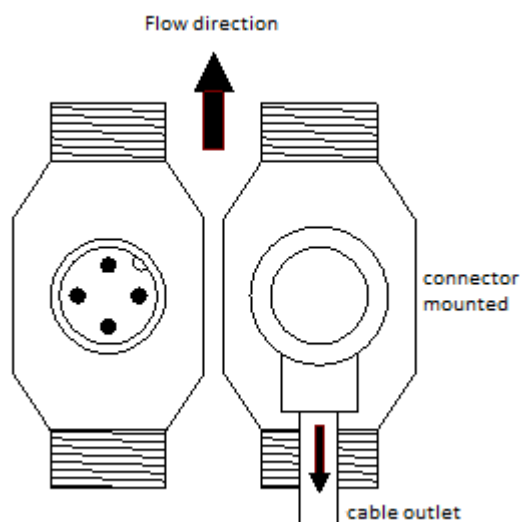


2-conductor, DIN-plug (DRS-...L442)



7.5. Cable outlet with M12x1 angle plug electronic options F3x and L3x

When using a pre-assembled M12x1 connection cable with angled plug, the cable outlet is always aligned opposite to the flow direction.



7.6. Compact electronics: (..C30R, ..C30M, ..C34P, ..C34N)

Please see
Operating Instruction Manual for compact electronics with frequency output

8. Commissioning

8.1. Frequency output

The measuring units are pre-adjusted and ready for operation after electrical connection.

8.2. Analogue output

The measuring units are pre-adjusted and ready for operation after electrical connection.

8.3. Compact electronics

Please see
Operating Instruction Manual for compact electronics with frequency output

9. Maintenance

As long as the medium to be measured is not polluted, the measuring unit is maintenance-free. In order to avoid problems, we recommend installation of a filter, such as magnet filter, Model MFR.

Should cleaning be deemed necessary, the sensor must be uninstalled and rinsed thoroughly in clean water.

Work on electronics may only be carried out by the supplier, so that the product guaranty remains valid.

10. Technical information

10.1. Sensor data

Measuring range:	2-40 L/min water
Sensor pulse output:	384 Hz at 40 L/min Metal Sensor (DRS-...150; DRS-...250) 352 Hz at 40 L/min plastic sensor (DRS-...350)
Max. operating pressure:	200 bar (DRS-...150; DRS-...250) 16 bar (DRS- ...350)
Temperature:	-20 to +80 °C (medium, standard), -20...+150 °C (medium, -S00x), -20 to +100 °C (storage)
Measuring accuracy:	±1.5% of f.s. ±5 % of f.s. (DRS-0)
Linearity:	±0.5 % of f.s.
Repeatability:	±0.1 % of f.s.
Electrical connection:	plug connector M12x1 1.5 m cable (DRS-0 only) 2 m cable (DRS-...F5 only)
Protection:	IP 65 (plug connector), IP 66 (cable)

Weight (sensor and electronics)

Sensor:	approx. 80 g (DRS-...350) approx. 550 g (DRS-...150; DRS-...250)
Electronics:	approx. 60 g (DRS-...K..; DRS-...F..; DRS-...L3...) approx. 100 g (DRS-...L442) approx.. 450 g (DRS-...Z...) approx. 650 g (DRS-...C...)

10.2. Evaluation electronics

DRS-0...K000 / DRS-0...S00x

Supply:	5...28 V _{DC}
Output pulse:	rectangular pulse signal, open collector, NPN, max. 10 mA

DRS-...F300, DRS-...F500

Supply:	12...28 V _{DC}
Power consumption:	10 mA
Pulse output:	PNP, open collector, max. 20 mA
Option:	Pt 100, 2-wire
Response time (Pt100):	t ₉₀ = 100 s

DRS-...F390

Supply:	24 V _{DC} ± 20 %
Power consumption:	15 mA
Pulse output:	PNP, open collector, max. 20 mA
Frequency divider:	1...1/128, factory setting
Option:	Pt 100, 2-wire
Response time (Pt100):	t ₉₀ = 25 s (DRS-91.../-92...) t ₉₀ = 100 s (DRS-93...)

DRS-...L...

Supply:	24 V _{DC} ± 20%
Output:	0(4)-20 mA, 3-wire or 2-wire
Max. load:	500 Ω
Option:	Pt 100 (2-wire)
Response time (Pt100):	t ₉₀ = 25 s (DRS-91.../-92...) t ₉₀ = 100 s (DRS-93...)

DRS-...C30...

Compact electronics	
Display:	3-digit LED
Switching outputs:	2 semiconductor PNP or NPN, factory set
Contact operation:	N/C / N/O contact frequency programmable
Setting:	with 2 buttons
Supply:	24 V _{DC} ±20%, 3-wire
Power consumption	approx. 100 mA
Electrical connection:	plug connector M12x1

DRS-...C34...

Compact electronics	
Display:	3-digit LED
Analogue output:	(0)4...20 mA adjustable, max. 500 Ω
Switching outputs:	1 semiconductor PNP or NPN, factory set
Contact operation:	N/C / N/O contact frequency programmable
Setting:	with 2 buttons
Supply:	24 V _{DC} ±20%, 3-wire
Power consumption:	approx. 100 mA mA
Electrical connection:	plug connector M12x1

11. Order Codes

Order Details (example: DRS-9350 I4 L303 0)

Material sensor housing	Model	Connection	Evaluating electronics	Option
			Frequency output F300 = Plug connector M12x1, PNP F320 = Plug connector M12x1, PNP, divider 1:2 F340 = Plug connector M12x1, PNP, divider 1:4 F390 = Plug connector M12x1, PNP, divider 1... ¹ /128 F500 = 2 m PVC cable, PNP Analogue output L303 = Plug connector M12x1, 0 - 20 mA, 3-wire L342 = Plug connector M12x1, 4 - 20 mA, 2-wire L343 = Plug connector M12x1, 4 - 20 mA, 3-wire L442 = Plug connector DIN 43 650, 4 - 20 mA, 2-wire Compact electronics¹⁾ C30M = LED display, 2 x NPN switching output, Plug connector M12x1 C30R = LED display, 2 x NPN switching output, Plug connector M12x1 C34N = LED display, 4 - 20 mA, 1 NPN switching output, Plug connector M12x1 C34P = LED display, 4 - 20 mA, 1 PNP switching output, Plug connector M12x1	
Brass	DRS-9150	14 = G 1/2 female thread G4 = G 1/2 female/ male thread		0 = without P = Pt 100 ²⁾ Y = Special model
Stainless steel	DRS-9250	G5 = G 3/4 male thread		
Plastic (PPO)	DRS-9350	N5 = 3/4 NPT male thread		

¹⁾ Please specify flow direction in writing.

²⁾ Only for option F3/F5 and L3x3 in brass and st.st. version

Plug-on display

For model DRS-...L442 (with 4-20 mA output and DIN plug connector)

Description	Order number
4-digit LED, connector DIN 43650, 2-wire, supply through analogue output	AUF-1000
as above however, with additional open collector output	AUF-1001

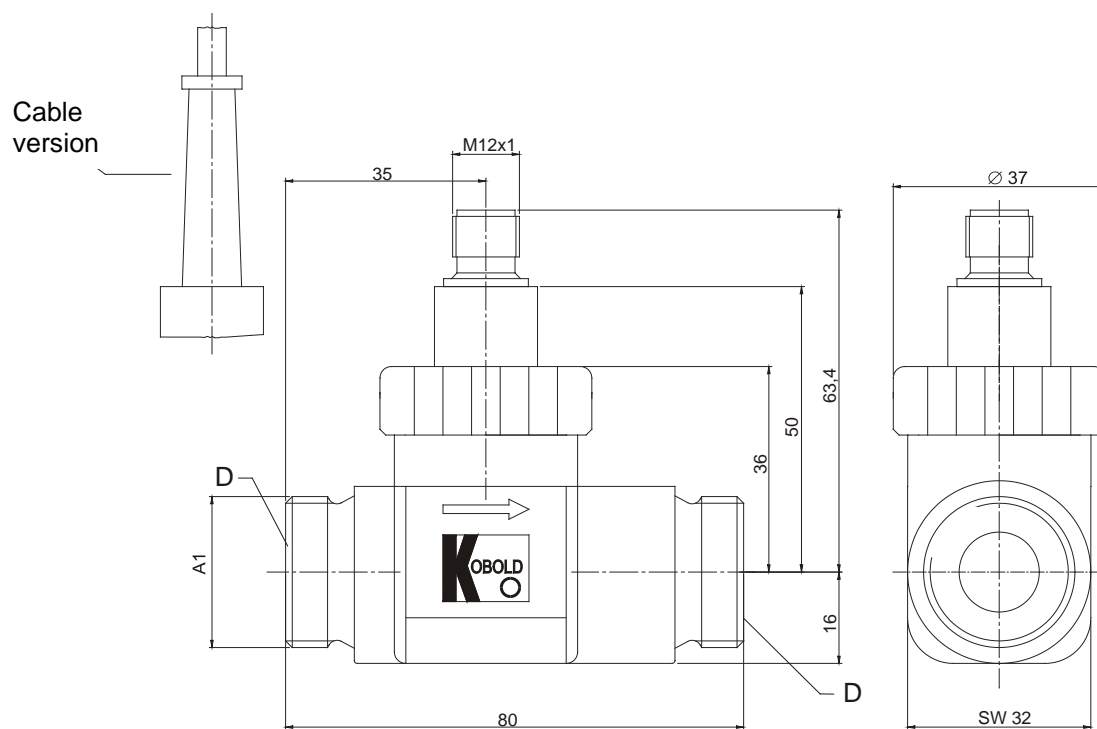


Order details OEM version example: DRS-0350 I4 K0000)

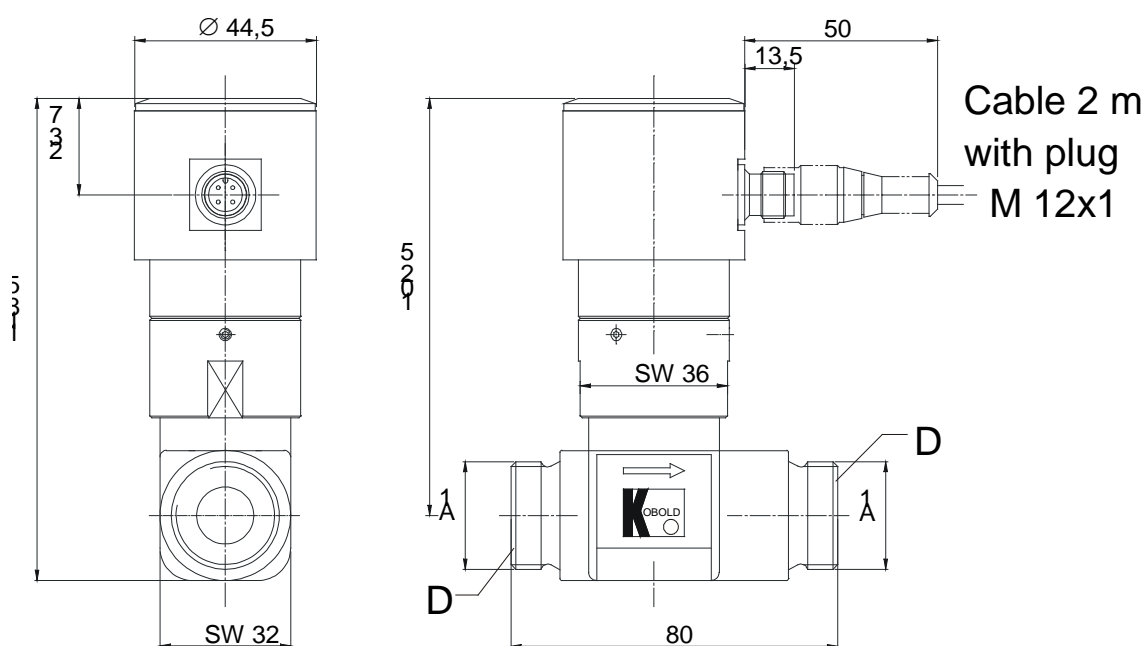
Material sensor housing	Model	Connection	Evaluating electronics
Brass	DRS-0150	I4 = G 1/2 female thread	Frequency output K0000 = 1.5 m PUR cable, black, NPN, OEM without CE S0000 = 1.5 m silicone cable, NPN, OEM without CE S000P = 1.5 m silicone cable, NPN, PT100, OEM without CE, Pt100, max. 150 °C (not for DRS-0350)
Stainless steel	DRS-0250	G4 = G 1/2 female/male thread	
Plastic (PPO)	DRS-0350	G5 = G 3/4 male thread	
		N5 = 3/4 NPT male thread	

12. Dimensions

Connection threads: female/female; male/male and female/male with the same outer dimensions.



DRS-...F/...L



DRS-...C

D = Sealing areas

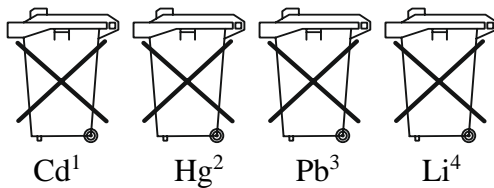
13. Disposal

Note!

- Avoid environmental damage caused by media-contaminated parts
- Dispose of the device and packaging in an environmentally friendly manner
- Comply with applicable national and international disposal regulations and environmental regulations.

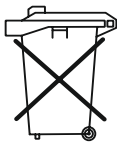
Batteries

Batteries containing pollutants are marked with a sign consisting of a crossed-out garbage can and the chemical symbol (Cd, Hg, Li or Pb) of the heavy metal that is decisive for the classification as containing pollutants:



1. „Cd" stands for cadmium
2. „Hg" stands for mercury
3. „Pb" stands for lead
4. „Li" stands for lithium

Electrical and electronic equipment



14. EU Declaration of Conformance

We, KOBOLD-Messring GmbH, Hofheim-Ts, Germany, declare under our sole responsibility that the product:

Turbine-wheel Flow Meter Model: DRS-...

to which this declaration relates is in conformity with the standards noted below:

EN 61000-6-4:2011

Electromagnetic compatibility (EMC) - Part 6-4: Generic standards - Emission standard for industrial environments

EN 61000-6-2:2005

Electromagnetic compatibility (EMC) - Part 6-2: Generic standards - Immunity for industrial environments

EN 61010-1:2020

Safety requirements for electrical equipment for measurement, control and laboratory use - Part 1: General requirements

EN 60529:2014

Degrees of protection provided by enclosures (IP Code)

EN IEC 63000:2018

Technical documentation for the assessment of electrical and electronic products with respect to the restriction of hazardous substances

Also, the following EC guidelines are fulfilled:

2014/30/EU

EMC Directive

2011/65/EU

RoHS (category 9)

2015/863/EU

Delegated Directive (RoHS III)

Hofheim, 24 May 2021



H. Volz
General Manager



M. Wenzel
Proxy Holder

15. UK Declaration of Conformity

We, KOBOLD Messring GmbH, Hofheim-Ts, Germany, declare under our sole responsibility that the product:

Turbine-wheel Flow Meter model: DRS-...

to which this declaration relates is in conformity with the standards noted below:

BS EN 61000-6-4:2007+A1:2011

Electromagnetic compatibility (EMC). Generic standards. Emission standard for industrial environments

BS EN 61000-6-2:2005

Electromagnetic compatibility (EMC). Generic standards. Immunity for industrial environments

BS EN 61010-1:2010+A1:2019

Safety requirements for electrical equipment for measurement, control, and laboratory use. General requirements

BS EN 60529:1992+A2:2013

Degrees of protection provided by enclosures (IP Code)

BS EN IEC 63000:2018

Technical documentation for the assessment of electrical and electronic products with respect to the restriction of hazardous substances.

Also, the following UK guidelines are fulfilled:

S.I. 2016/1091

Electromagnetic Compatibility Regulations 2016

S.I. 2012/3032

The Restriction of the Use of Certain Hazardous Substances in Electrical and Electronic Equipment Regulations 2012

Hofheim, 24 May 2021



H. Volz
General Manager



M. Wenzel
Proxy Holder